



Medium Chess Puzzle # 0028

By

G Bud Games
<https://gbud.in>

September 30, 2021

Contents

1	Medium Chess puzzle # 0028 - Mate in 2 moves	3
1.1	Medium chess puzzle 0028	4
1.2	Solution to medium chess puzzle 0028	4
1.2.1	Solution 1	5
1.2.2	Solution 2	8
1.2.3	Right moves for the solution to the medium chess puzzle 0028	12
1.2.4	Explanation for the moves	12
1.3	Categories of medium chess puzzle 0028	13
1.4	How to view the solution to medium chess puzzle 0028	13
1.5	How to get help for moves in the medium chess puzzle 0028	14
1.6	Play chess for free	15

List of Figures

1.1	Solve this medium chess puzzle 0028. Mate in 2 moves @ https://gbud.in/glx9ww2	4
1.2	Solve this medium chess puzzle online with solution @ https://gbud.in/glx9ww2	4
1.3	Initial board position of medium chess puzzle 0028	5
1.4	d1=Q+ - The king is forced to move to h2 due to this promotion	6
1.5	Kh2 - This is the only free square available	7
1.6	Rh8# - King can not move in h file and is blocked by friendly pieces	8
1.7	Initial board position of medium chess puzzle 0028	9
1.8	d1=R+ - The king is forced to move to h2 due to this promotion	10
1.9	Kh2 - This is the only free square available	11
1.10	Rh8# - King can not move in h file and is blocked by friendly pieces	12
1.11	Click the solution button to view solutions @ https://gbud.in/glx9ww2	13
1.12	Click the help button to get help on next move @ https://gbud.in/glx9ww2	14
1.13	Solve more medium puzzles @ https://gbud.in/chsmdpz	14
1.14	Solve other puzzles @ https://gbud.in/chsgppz	15
1.15	Play chess online for free. Solve puzzles and play with friends	15
1.16	Solve this puzzle online by scanning this QR code or go to the link below	16

Chapter 1

Medium Chess puzzle # 0028 - Mate in 2 moves

Solve this medium chess puzzle and improve your chess games through improvement of your chess strategies and chess tactics.

Puzzle No : 0028

Difficulty level : medium

Description : Mate in 2 moves

Next Move : Black

Player level : Intermediate

Short URL for puzzle : <https://gbud.in/glx9ww2>

1.1 Medium chess puzzle 0028

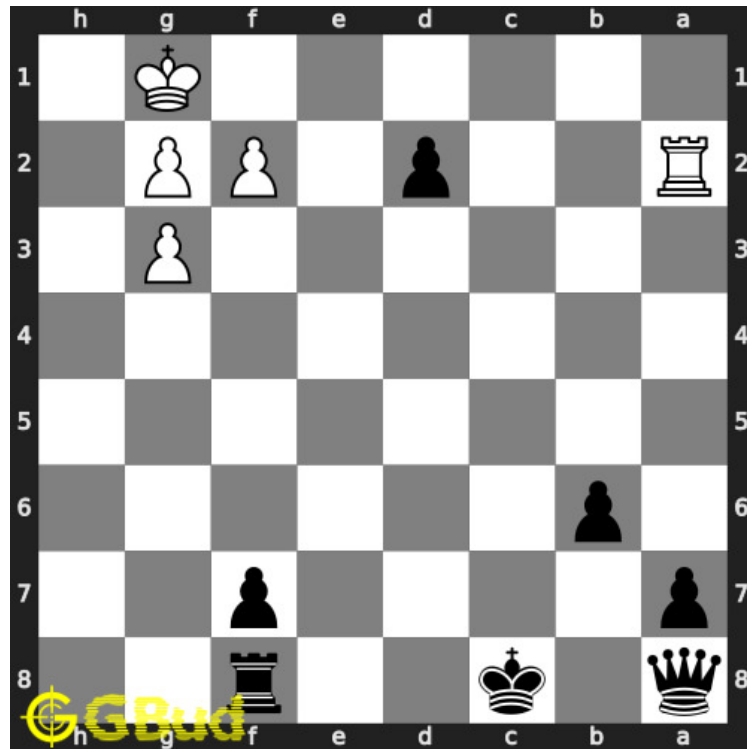


Figure 1.1: Solve this medium chess puzzle 0028. Mate in 2 moves @ <https://gbud.in/glx9ww2>



Figure 1.2: Solve this medium chess puzzle online with solution @ <https://gbud.in/glx9ww2>

1.2 Solution to medium chess puzzle 0028

At this puzzle, next [move](#) is by [Black](#). The objective of the puzzle is to mate in 2 moves.

See the interactive solution at the [puzzle page](#)

1.2.1 Solution 1

1.2.1.1 Initial board position

This is the initial board position of medium chess puzzle 0028.

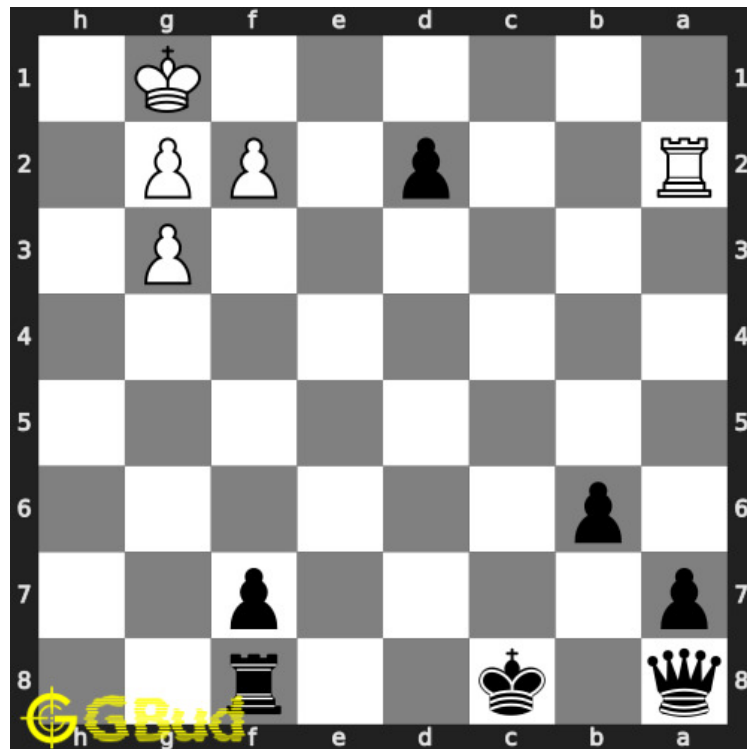


Figure 1.3: Initial board position of medium chess puzzle 0028

1.2.1.2 Move 1

Move by black

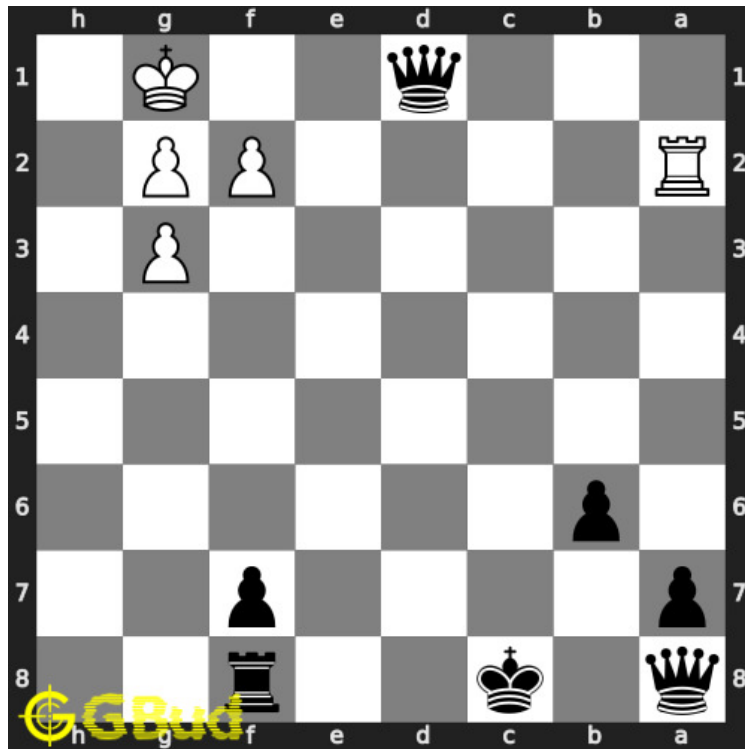


Figure 1.4: d1=Q+ - The king is forced to move to h2 due to this promotion

1.2.1.3 Move 2

Move by white

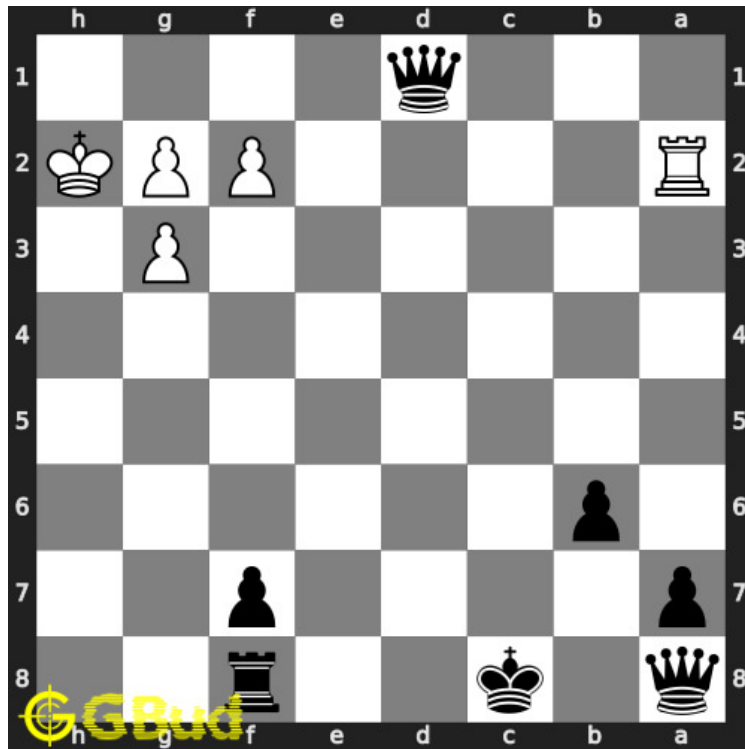


Figure 1.5: Kh2 - This is the only free square available

1.2.1.4 Move 3

Move by black

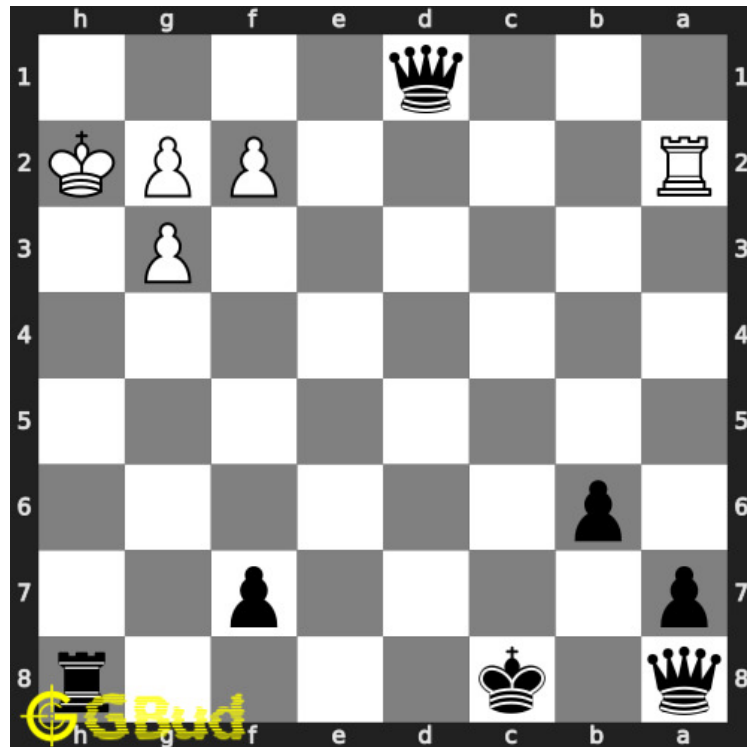


Figure 1.6: Rh8# - King can not move in h file and is blocked by friendly pieces

1.2.2 Solution 2

1.2.2.1 Initial board position

This is the initial board position of medium chess puzzle 0028.

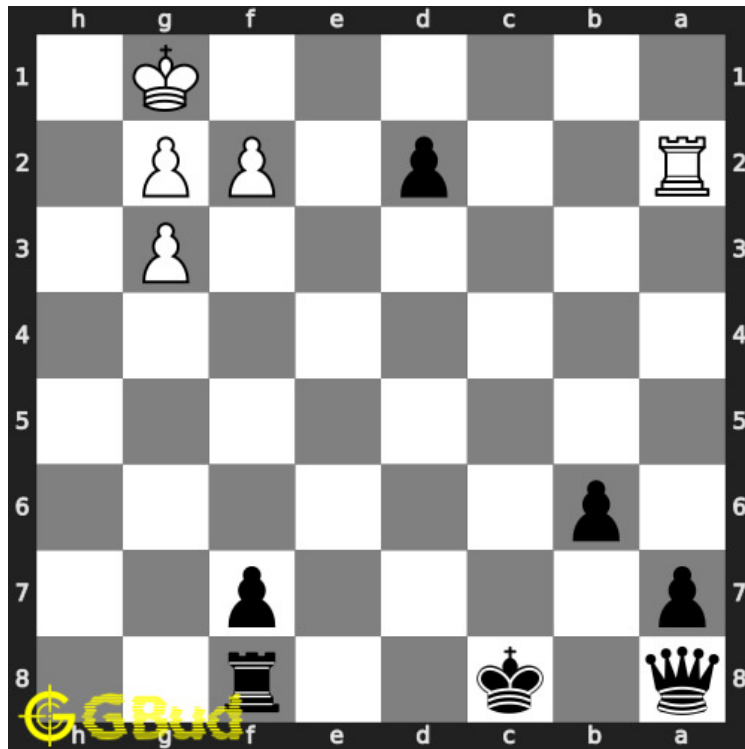


Figure 1.7: Initial board position of medium chess puzzle 0028

1.2.2.2 Move 1

Move by black

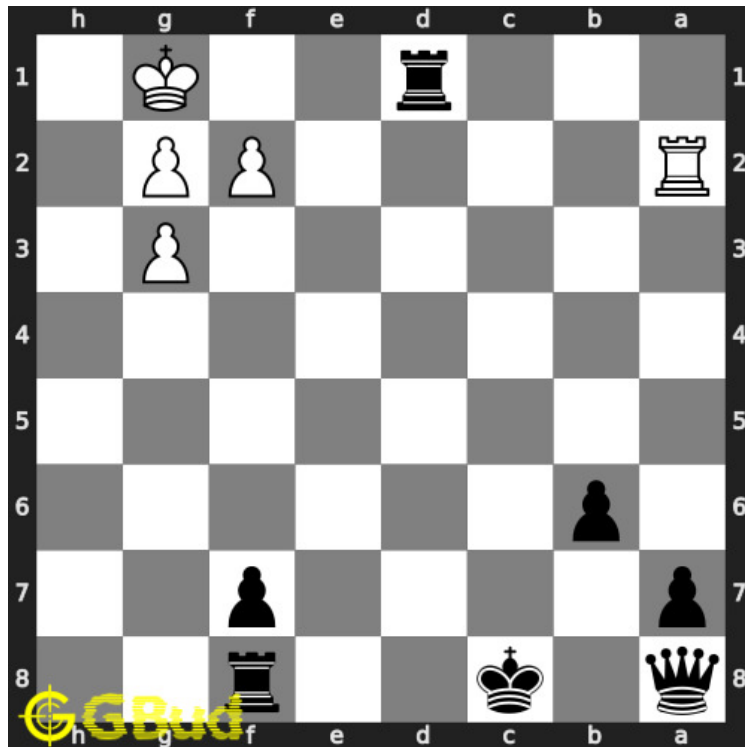


Figure 1.8: d1=R+ - The king is forced to move to h2 due to this promotion

1.2.2.3 Move 2

Move by white

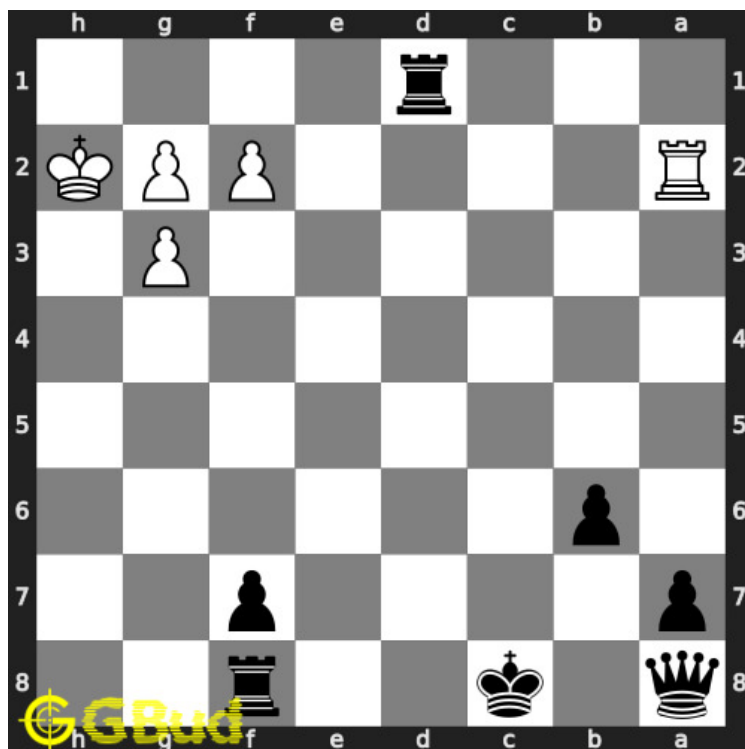


Figure 1.9: Kh2 - This is the only free square available

1.2.2.4 Move 3

Move by black

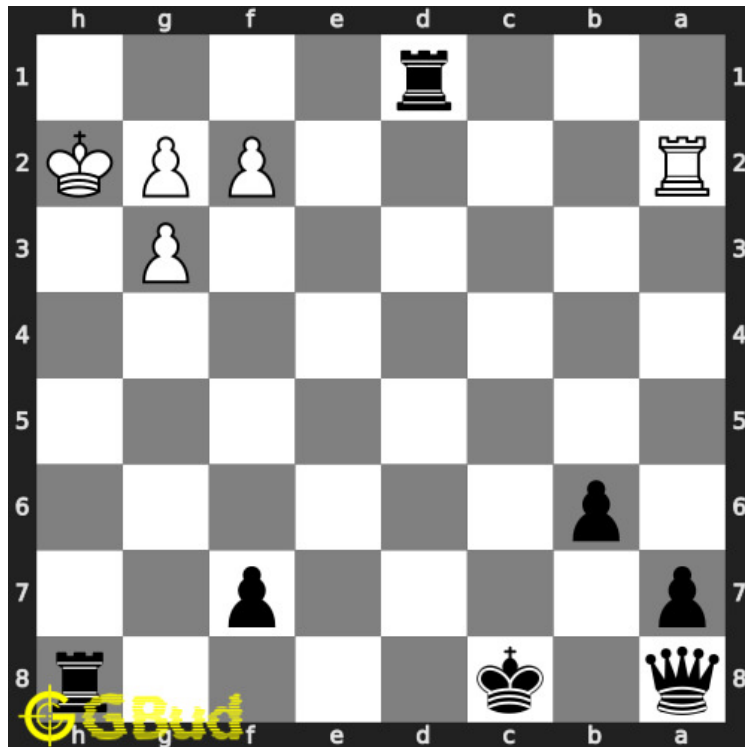


Figure 1.10: Rh8# - King can not move in h file and is blocked by friendly pieces

1.2.3 Right moves for the solution to the medium chess puzzle 0028

Based on the objective of the puzzle, you have to make the right moves. Following are the right moves

1. d1=Q+, Rh8#
2. d1=R+, Rh8#

1.2.4 Explanation for the moves

1. d1=Q+ - The king is forced to move to h2 due to this promotion
2. d1=R+ - The king is forced to move to h2 due to this promotion
3. Kh2 - This is the only free square available
4. Rh8# - King can not move in h file and is blocked by friendly pieces
5. For right move - You have understood the power of promotion.
6. For wrong move - You could have promoted the pawn and ended the game

1.3 Categories of medium chess puzzle 0028

This medium chess puzzle falls in these categories.

1. [Medium chess puzzles](#)
2. [Mate in 2 puzzles in chess](#)
3. [Endgame puzzles in chess](#)
4. [Promotion puzzles in chess](#)

1.4 How to view the solution to medium chess puzzle 0028

To view the [solution to this puzzle](#), follow the steps given below

1. Go to the [puzzle page](#)
2. Click the solution button (Key as shown [below](#)) to view the solution

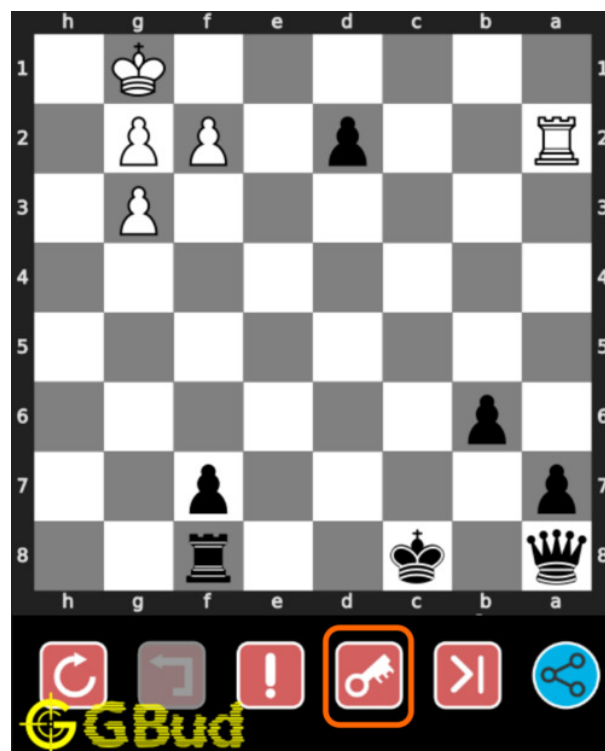


Figure 1.11: Click the solution button to view solutions @ <https://gbud.in/glx9ww2>

1.5 How to get help for moves in the medium chess puzzle 0028

To get help or the possible next moves in the puzzle, , follow the steps given below

1. Go to the [puzzle page](#)
2. Click the help button (exclamation mark as shown [below](#)) to get help or suggestion on next possible [move](#)



Figure 1.12: Click the help button to get help on next move @ <https://gbud.in/glx9ww2>



Figure 1.13: Solve more medium puzzles @ <https://gbud.in/chsmdpz>



Figure 1.14: Solve other puzzles @ <https://gbud.in/chsgppz>

1.6 Play chess for free

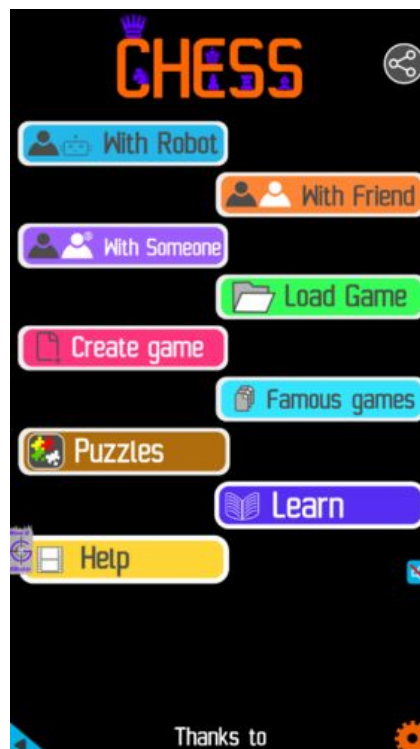


Figure 1.15: Play chess online for free. Solve puzzles and play with friends

Play chess for free at <https://gbud.in/chs>

We present you a platform to play chess online with friends for free. No need to install any app. You can play chess for free without registration or login.

Simple. You can do several chess related activities.

1. [solve chess puzzles](#)
2. [learn about chess](#)

3. [play chess with computer](#)
4. [play chess with friend](#)
5. [create your own chess games](#)
6. [fen viewer](#)
7. [fen editor](#)
8. [fen generator](#)
9. [pgn viewer](#)
10. [chess board editor](#)
11. [view famous chess games.](#)



Figure 1.16: Solve this puzzle online by scanning this QR code or go to the link below

<https://gbud.in/glx9ww2>

Read the latest article on Medium Chess puzzle # 0028 - Mate in 2 moves by scanning this QR code or click the link

Previous article : [« Medium Chess puzzle # 0027 - Mate in 2 moves](#)

Next article : [Medium chess puzzles »](#)

[Back to top](#)

[Contact Us](#)

© GBud Games 2021